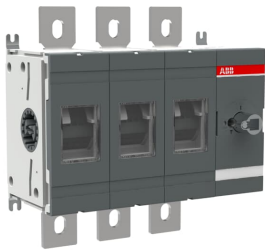




PRODUCT-DETAILS

OT630E30

OT630E30 SWITCH-DISCONNECTOR



| General Information | |
|-----------------------|---|
| Extended Product Type | OT630E30 |
| Product ID | 1SCA022753R4440 |
| EAN | 6417019245041 |
| Catalog Description | OT630E30 SWITCH-DISCONNECTOR |
| Long Description | 3-pole, front operated, base mounted switch-d disconnector, handle and shaft are not included, terminal bolt kit included |

| Circular Value | |
|---|-----------------|
| Conflict Minerals Reporting Template (CMRT) | 9AKK108467A5658 |
| End of Life Instructions | 1SCC301119M0201 |
| Environmental Information | 1SCC301232D0201 |
| Environmental Product Declaration - EPD | 1SCC301284D0201 |
| REACH Declaration | 1SCC011021D0201 |
| RoHS Information | 1SCC011020D0201 |
| Toxic Substances Control Act - TSCA | 1SCC011025D0201 |

Eco Transparency

| | |
|---|-----------------|
| Environmental Product Declaration - EPD | 1SCC301284D0201 |
|---|-----------------|

Ordering

| | |
|------------------------|--------------|
| Minimum Order Quantity | 1 piece |
| Customs Tariff Number | 85365080 |
| Country of Origin | Finland (FI) |

Popular Downloads

| | |
|---|--|
| Data Sheet, Technical Information | 1SCC301020C0201 |
| Instructions and Manuals | 1SCC301042M0211 |
| Mechanical Drawings | 1SCC301314F0001 1SCC301313F0001 OT600_800E30.iqs |
| Environmental Product Declaration - EPD | 1SCC301284D0201 |
| End of Life Instructions | 1SCC301119M0201 |

Dimensions

| | |
|----------------------------|--------|
| Product Net Width | 266 mm |
| Product Net Height | 250 mm |
| Product Net Depth / Length | 140 mm |
| Product Net Weight | 6.1 kg |

Technical

| | |
|--|--|
| Rated Operational Current AC-21A (I _e) | (380 ... 415 V) 630 A (500 V) 630 A (690 V) 630 A (1000 V) 630 A |
| Rated Operational Current AC-22A (I _e) | (380 ... 415 V) 630 A (500 V) 630 A (690 V) 630 A |
| Rated Operational Current AC-23A (I _e) | (380 ... 415 V) 630 A (500 V) 630 A (690 V) 630 A |
| Rated Operational Power AC-23A (P _e) | (220 ... 240 V) 200 kW (400 ... 415 V) 355 kW (500 V) 400 kW (690 V) 630 kW |
| Conventional Free-air Thermal Current (I _{th}) | Θ = 40 °C 630 A |
| Conventional Thermal Current (I _{the}) | Fully Enclosed 630 A |
| Rated Impulse Withstand Voltage (U _{imp}) | 12 kV |
| Rated Insulation Voltage (U _i) | acc. to IEC/EN 60664-1 1000 V |
| Rated Operational Voltage | Main Circuit 1000 V |
| Rated Short-Circuit Making Capacity (I _{cm}) | (690 V) 80 kA |
| Rated Short-time Withstand Current Low | for 1 s 20 kA |

| | |
|------------------------------|---|
| Voltage (I _{cw}) | |
| Power Loss | at Rated Operating Conditions per Pole 25 W |
| Pollution Degree | 3 |
| Handle Type | Handle and shaft not included |
| Switches Operating Mechanism | Mechanism at the End of the Switch 30 (Right Side) |
| Distance Between Phases | Standard |
| Position of Line Terminals | Top In - Bottom Out Bottom In - Top Out |
| Operating Mode | Front operated |
| Standards | IEC 60947-3 |
| Special Functions | No |
| Mounting Type | Base mounting |
| Number of Poles | 3 |
| Degree of Protection | Front IP00 |
| Terminal Type | Lug terminals |
| Tightening Torque | acc. IEC 60947-1 50 ... 75 N·m |
| Mechanical Durability | 10000 |
| Lock Type | No |

Technical UL/CSA

| | |
|-------------------|--------------------------------|
| Tightening Torque | acc. IEC 60947-1 50 ... 75 N·m |
|-------------------|--------------------------------|

Environmental

| | |
|-------------------------------------|--|
| RoHS Status | Following EU Directive 2011/65/EU and Amendment 2015/863 July 22, 2019 |
| Environmental Information | 1SCC301232D0201 |
| Toxic Substances Control Act - TSCA | 1SCC011025D0201 |

Certificates and Declarations

| | |
|--------------------------------|-----------------|
| Declaration of Conformity - CE | 1SCC301140D2704 |
| DNV GL Certificate | 1SCC301184D0203 |
| REACH Declaration | 1SCC011021D0201 |

Container Information

| | |
|--------------------------------|---------------|
| Package Level 1 Units | box 1 piece |
| Package Level 1 Width | 260 mm |
| Package Level 1 Depth / Length | 335 mm |
| Package Level 1 Height | 152 mm |
| Package Level 1 Gross Weight | 6.5 kg |
| Package Level 1 EAN | 6417019245041 |

Classifications

| | |
|----------------------------|--|
| Object Classification Code | Q |
| ETIM 7 | EC000216 - Switch disconnecter |
| ETIM 8 | EC000216 - Switch disconnecter |
| ETIM 9 | EC000216 - Switch disconnecter (low voltage) |
| eClass | V11.1 : 27371403 |

Categories

Low Voltage Products and Systems → Switches → Switch Disconnectors

