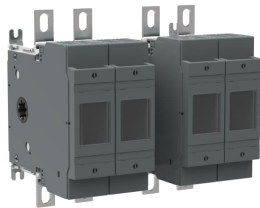




PRODUCT-DETAILS

# OS200D22N2

## OS200D22N2 SWITCH FUSE



General Information	
Extended Product Type	OS200D22N2
Product ID	1SCA022725R7340
EAN	6417019234182
Catalog Description	OS200D22N2 SWITCH FUSE
Long Description	Switch Fuses,Front Operated,4-pole,22 (Between the Poles),DIN,0,Handle and shaft not included,Switched - With Solid Link

Circular Value	
Conflict Minerals Reporting Template (CMRT)	9AKK108467A5658
Environmental Product Declaration - EPD	1SCC311197D0201
REACH Declaration	1SCC011021D0201
RoHS Information	1SCC011020D0201
Toxic Substances Control Act - TSCA	1SCC011025D0201

Eco Transparency

Environmental Product Declaration - EPD	1SCC311197D0201
---	-----------------

Ordering

Minimum Order Quantity	1 piece
Customs Tariff Number	85365080
Country of Origin	Finland (FI)

Popular Downloads

Data Sheet, Technical Information	1SCC311013C0201
Instructions and Manuals	1SCC311012M0219
Environmental Product Declaration - EPD	1SCC311197D0201

Dimensions

Product Net Width	219 mm
Product Net Height	199 mm
Product Net Depth / Length	149 mm
Product Net Weight	3.8 kg 8.4 lb

Technical

Rated Operational Current AC-21A (I <sub>e</sub> )	(500 V) 200 A (690 V) 200 A
Rated Operational Current AC-22A (I <sub>e</sub> )	(380 ... 415 V) 200 A (500 V) 200 A (690 V) 200 A
Rated Operational Current AC-23A (I <sub>e</sub> )	(380 ... 415 V) 200 A (500 V) 200 A (690 V) 200 A
Rated Operational Power AC-23A (P <sub>e</sub> )	(220 ... 240 V) 60 kW (400 V) 110 kW (415 V) 110 kW (500 V) 132 kW (690 V) 200 kW
Conventional Free-air Thermal Current (I <sub>th</sub> )	Θ = 40 °C 200 A
Conventional Thermal Current (I <sub>the</sub> )	Fully Enclosed 200 A
Rated Impulse Withstand Voltage (U <sub>imp</sub> )	12 kV
Rated Insulation Voltage (U <sub>i</sub> )	1000 V
Rated Operational Voltage	Main Circuit 690 V AC
Rated Short-time Withstand Current Low	for 1 s 8 kiloampere rms

Voltage (I <sub>cw</sub> )	
Rated Conditional Short-Circuit Current (I <sub>nc</sub> )	(690 V) 80 kA
Power Loss	at Rated Operating Conditions per Pole 17 W
Pollution Degree	3
Handle Type	Handle and shaft not included
Fourth Pole Position	Right Side
Fourth Pole Type	Switched - With Solid Link
Switches Operating Mechanism	22 (Between the Poles)
Position of Line Terminals	Top In - Bottom Out, Bottom In - Top Out
Fuse Size	NH0
Fuse System	DIN
Operating Mode	Front Operated
Standards	IEC 60947-3
Mounting Type	Base mounting
Number of Poles	4
Terminal Type	Lug terminals
Terminal Width	20 mm
Tightening Torque	15 ... 22 N·m
Rated Current (I <sub>n</sub> )	Main Circuit 200 A

## Technical UL/CSA

Tightening Torque	15 ... 22 N·m
-------------------	---------------

## Environmental

RoHS Status	Following EU Directive 2011/65/EU and Amendment 2015/863 July 22, 2019
Toxic Substances Control Act - TSCA	1SCC011025D0201

## Certificates and Declarations

CCC Certificate	CCC OS200-250 2016
Declaration of Conformity - CE	1SCC311091D2704
DNV GL Certificate	1SCC311123D0203
REACH Declaration	1SCC011021D0201

## Container Information

Package Level 1 Units	box 1 piece
Package Level 1 Width	230 mm 9.1 in
Package Level 1 Depth / Length	270 mm 10.6 in
Package Level 1 Height	170 mm 6.7 in
Package Level 1 Gross Weight	4.1 kg 9 lb
Package Level 1 EAN	6417019234182

Classifications	
Object Classification Code	Q
ETIM 7	EC001040 - Fuse switch disconnecter
ETIM 8	EC001040 - Fuse switch disconnecter
ETIM 9	EC001040 - Fuse switch disconnecter
eClass	V11.1 : 27371401
WEEE Category	5. Small Equipment (No External Dimension More Than 50 cm)

Categories

Low Voltage Products and Systems → Switches → Switch Fuses

