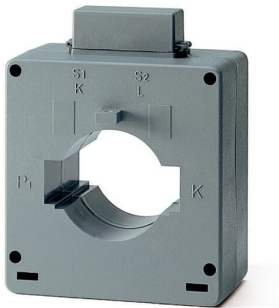




PRODUCT-DETAILS

# CT6/1500

## CT6/1500 Current transformer



General Information	
Extended Product Type	CT6/1500
Product ID	2CSG421220R1101
EAN	8012542606307
Catalog Description	CT6/1500 Current transformer
Long Description	CT6/1500 is used to transform primary currents to..5A secondary currents for c.a. measurement instruments

Technical	
Cable Use	Cable and Horizontal bar
Rated Primary Current ( $I_{pn}$ )	1500 A
Rated Secondary Current ( $I_{sn}$ )	5 A
Current Limit Function	FS 5
Frequency (f)	50 ... 60 Hz
Apparent Power Output	20 V·A
Power Loss	16 W
Secondary Output Connection	Plug-in connection

Accuracy	±0,5%
Model Number	Through-feed current converter
Number of Inputs	Primary 1
Mounting Type	Through Primary
Cable Cross-Section	50 mm
Rated Cross-Section	60 x 20 mm

Material Compliance

RoHS Information	2CSC445004K0201
RoHS Status	Following EU Directive 2002/95/EC August 18, 2005 and amendment
RoHS Date	31/03/2006 0.00.00
Conflict Minerals Reporting Template (CMRT)	9AKK108468A3363

Environmental

Ambient Air Temperature	Operation -5 ... 50 °C
Degree of Protection	IP30
Environmental Information	See RoHS Information

Dimensions

Product Net Width	105 mm
Product Net Height	26.5 mm
Product Net Depth / Length	61 mm
Product Net Weight	0.53 kg

Ordering

Package Level 1 Units	box 1 piece
Package Level 1 Gross Weight	0.576 kg

Certificates and Declarations

Declaration of Conformity - CE	9AKK106713A5700
--------------------------------	-----------------

Installation

Instructions and Manuals	No document needed
--------------------------	--------------------

Popular Downloads

Data Sheet, Technical Information	9AKK107046A0430
-----------------------------------	-----------------

Classifications

ETIM 8	EC002048 - Current transformer
--------	--------------------------------

ETIM 9	EC002048 - Current transformer
WEEE Category	5. Small Equipment (No External Dimension More Than 50 cm)
WEEE B2C / B2B	Business To Consumer
CN8	85043121
eClass	V11.0 : 27210902
Object Classification Code	T

Categories

Low Voltage Products and Systems → Modular DIN Rail Products → Energy Efficiency Devices → Current Transformers

