

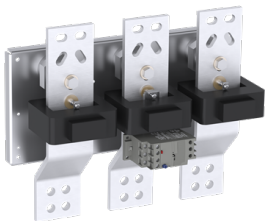


PRODUCT-DETAILS

EF1250DU-1250

EF1250DU-1250 Electronic Overload Relay

375 ... 1250 A



General Information	
Extended Product Type	EF1250DU-1250
Product ID	1SFA739001R1001
EAN	7320500513880
Catalog Description	EF1250DU-1250 Electronic Overload Relay 375 ... 1250 A
Long Description	The E1250DU are self-supplied electronic overload relays, which means no extra external supply is needed. It offers reliable protection for motors in the event of overload or phase failure. Easy to use like a thermal overload relay and compatible with standard motor applications, the electronic overload relay is convincing, above all, due to its wide setting range, high accuracy, high operational temperature range and the possibility to select a trip class (10E, 20E, 30E). Further features are the temperature compensation, trip contact (N.C.), signal contact (N.O.), automatic or manual reset selectable, trip-free mechanism, STOP and TEST function and a trip indication. Busbar kits are available as accessory for <u>contactor mounting</u> .

Ordering	
Minimum Order Quantity	1 piece
Customs Tariff Number	85364900

Popular Downloads	
-------------------	--

Data Sheet, Technical Information	1SBC100214C0201
Instructions and Manuals	1SFC107001M5501
CAD Dimensional Drawing	2CDC001079B0201

Dimensions

Product Net Width	350 mm
Product Net Height	198 mm
Product Net Depth / Length	425 mm
Product Net Weight	10 kg

Technical

Setting Range	375 ... 1250 A
Rated Operational Voltage	Auxiliary Circuit 600 V Main Circuit 1000 V
Rated Operational Current (I _e)	1250 A
Rated Operational Current AC-3 (I _e)	1250
Rated Frequency (f)	Main Circuit 60 Hz
Rated Impulse Withstand Voltage (U _{imp})	Auxiliary Circuit 6 kV Main Circuit 8 kV
Rated Insulation Voltage (U _i)	AC 1000 V Input Circuit / Output Circuit 690 V
Number of Poles	3
Number of Auxiliary Contacts NC	1
Number of Auxiliary Contacts NO	1
Conventional Free-air Thermal Current (I _{th})	Auxiliary Circuit NC 6 A Auxiliary Circuit NO 6 A
Rated Operational Current AC-15 (I _e)	(120 V) NC 3 (120 V) NO 3 A (240 V) NC 3 A (400 V) NC 1.1 (400 V) NO 1.1 A (500 V) NC 0.75 (500 V) NO 0.75 A
Rated Operational Current DC-13 (I _e)	(125 V) NC 0.55 A (125 V) NO 0.55 (24 V) NC 1.5 (24 V) NO 1.5 (250 V) NC 0.27 (250 V) NO 0.27 (60 V) NC 0.55 (60 V) NO 0.55
Degree of Protection	Auxiliary Circuit Terminals IP20 Main Circuit Terminals IP00
Pollution Degree	3
Connecting Capacity Auxiliary Circuit	Flexible with Ferrule 1/2x 0.75 ... 2.5 mm² Flexible with Insulated Ferrule 1/2x 0.75 ... 2.5 mm² Flexible 1/2x 0.75 ... 2.5 mm² Rigid 1/2x 1 ... 4 mm²
Connecting Capacity Main Circuit	Busbar 80x10 mm²
Tightening Torque	Auxiliary Circuit 0.8 ... 1.2 N·m
Wire Stripping Length	9 mm
Recommended Screw Driver	Auxiliary Circuit Pozidriv 2
Mounting Position	1 ... 6

Power Loss	at Rated Operating Conditions per Pole 0.005 W
Suitable For	AF1350 AF1650 AF2050
Standards	IEC/EN 60947-1, IEC/EN 60947-4-1, IEC/EN 60947-5-1, UL 60947-1, UL 60947-4-1

Technical UL/CSA

Maximum Operating Voltage UL/CSA	Main Circuit 600 V
Contact Rating UL/CSA	(NC:) B600 (NC:) Q300 (NO:) B600 (NO:) Q300
Connecting Capacity Main Circuit UL/CSA	Busbar 3.15x0.39 in
Connecting Capacity Auxiliary Circuit UL/CSA	Flexible 1/2x 18-10 AWG Stranded 1/2x 18-10 AWG
Tightening Torque UL/CSA	Auxiliary Circuit 7 ... 11 in-lb

Environmental

Ambient Air Temperature	Operation -25 ... +70 °C Operation Compensated -25 ... 70 °C Storage -50 ... +80 °C
Ambient Air Temperature Compensation	Yes
Maximum Operating Altitude Permissible	Without Derating 2000 m
Resistance to Shock acc. to IEC 60068-2-27	11 ms Pulse 15g
Resistance to Vibrations	3g 3 ... 150 Hz
RoHS Status	Following EU Directive 2011/65/EU

Material Compliance

Conflict Minerals Reporting Template (CMRT)	9AKK108467A5658
REACH Declaration	2CMT2021-006202
RoHS Information	2CMT2021-006277
RoHS Status	Following EU Directive 2011/65/EU
WEEE B2C / B2B	Business To Business
WEEE Category	5. Small Equipment (No External Dimension More Than 50 cm)

Certificates and Declarations

Declaration of Conformity - CE	2CMT2015-005441
Declaration of Conformity - UKCA	2CMT2020-006120

Container Information

Package Level 1 Units	box 1 piece
Package Level 1 Width	555 mm
Package Level 1 Height	500 mm
Package Level 1 Depth / Length	365 mm

Package Level 1 Gross Weight	10.5 kg
Package Level 1 EAN	7320500513880

Classifications

ETIM 4	EC001080 - Electronic overload relay
ETIM 5	EC001080 - Electronic overload relay
ETIM 6	EC001080 - Electronic overload relay
ETIM 7	EC001080 - Electronic overload relay
ETIM 8	EC001080 - Electronic overload relay
eClass	V11.1 : 27371502
UNSPSC	39121500

Accessories

Identifier	Description	Type	Quantity	Unit Of Measure
1SFA616162R1014	KPR3-101L Reset push button	KPR-101L	1	piece

Where Used (as part of "kit")

Identifier	Description	Type
3BHB047970R0008		Kit
3BHB047970R0009		Kit

Categories

Low Voltage Products and Systems → Control Products → Contactors → Electronic Overload Relays

