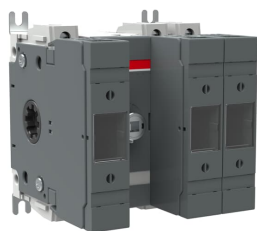




PRODUCT-DETAILS

OS50GF12

OS50GF12 SWITCH FUSE



General Information	
Extended Product Type	OS50GF12
Product ID	1SCA115552R1001
EAN	6417019478814
Catalog Description	OS50GF12 SWITCH FUSE
Long Description	Switch Fuses,Front Operated,3-pole,12 (Between the Poles),NFC,14x51,Handle and shaft not included,

Circular Value	
Conflict Minerals Reporting Template (CMRT)	9AKK108467A5658
Environmental Product Declaration - EPD	1SCC311195D0201
REACH Declaration	1SCC011021D0201
RoHS Information	1SCC011020D0201
Toxic Substances Control Act - TSCA	1SCC011025D0201

Eco Transparency

Environmental Product Declaration - EPD	1SCC311195D0201
---	-----------------

Ordering

Minimum Order Quantity	1 piece
Customs Tariff Number	85365080
Country of Origin	Finland (FI)

Popular Downloads

Data Sheet, Technical Information	1SCC311013C0201
Instructions and Manuals	1SCC311036M0212
Environmental Product Declaration - EPD	1SCC311195D0201

Dimensions

Product Net Width	112 mm
Product Net Height	112 mm
Product Net Depth / Length	109 mm
Product Net Weight	1.25 kg 2.76 lb

Technical

Rated Operational Current AC-21A (I _e)	(500 V) 50 A (690 V) 50 A
Rated Operational Current AC-22A (I _e)	(500 V) 50 A (690 V) 50 A
Rated Operational Current AC-23A (I _e)	(500 V) 50 A (690 V) 50 A
Rated Operational Power AC-23A (P _e)	(220 ... 240 V) 11 kW (400 V) 22 kW (415 V) 22 kW (500 V) 30 kW (690 V) 37 kW
Conventional Free-air Thermal Current (I _{th})	Θ = 40 °C 50 A
Conventional Thermal Current (I _{the})	Fully Enclosed 50 A
Rated Impulse Withstand Voltage (U _{imp})	12 kV
Rated Insulation Voltage (U _i)	1000 V
Rated Operational Voltage	Main Circuit 690 V AC
Rated Short-time Withstand Current Low Voltage (I _{cw})	for 1 s 2.5 kiloampere rms
Rated Conditional Short-	(690 V) 80 kA

Circuit Current (I _{nc})	
Power Loss	at Rated Operating Conditions per Pole 7.5 W
Pollution Degree	3
Handle Type	Handle and shaft not included
Switches Operating Mechanism	12 (Between the Poles)
Position of Line Terminals	Top In - Bottom Out, Bottom In - Top Out
Fuse Size	14x51
Fuse System	NFC
Operating Mode	Front Operated
Standards	IEC 60947-3
Mounting Type	Base mounting
Number of Poles	3
Cable Cross-Section	2.5 ... 25 mm ²
Terminal Type	Screw Terminals
Tightening Torque	3 N·m 4 N·m
Rated Current (I _n)	Main Circuit 50 A

Technical UL/CSA

Tightening Torque	3 N·m 4 N·m
-------------------	----------------

Environmental

RoHS Status	Following EU Directive 2011/65/EU and Amendment 2015/863 July 22, 2019
Toxic Substances Control Act - TSCA	1SCC011025D0201

Certificates and Declarations

CCC Certificate	CCC OS32-63G_ 2016.pdf
Declaration of Conformity - CE	1SCC311136D2703
DNV GL Certificate	1SCC311125D0203
REACH Declaration	1SCC011021D0201

Container Information

Package Level 1 Units	box 1 piece
Package Level 1 Width	170 mm 6.7 in
Package Level 1 Depth / Length	190 mm 7.5 in
Package Level 1 Height	145 mm 5.7 in
Package Level 1 Gross Weight	1.4 kg 3 lb
Package Level 1 EAN	6417019478814

Classifications

Object Classification Code	Q
ETIM 7	EC001040 - Fuse switch disconnecter
ETIM 8	EC001040 - Fuse switch disconnecter
ETIM 9	EC001040 - Fuse switch disconnecter
UNSPSC	39122233
IDEA Granular Category Code (IGCC)	5291 >> Fuse switch disconnecter
eClass	V11.1 : 27371401
WEEE Category	5. Small Equipment (No External Dimension More Than 50 cm)

Categories

Low Voltage Products and Systems → Switches → Switch Fuses

