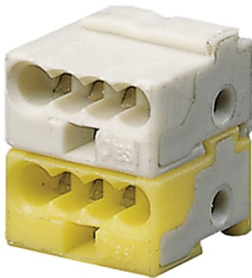




PRODUCT-DETAILS

# KLEMME

## KLEMME Connection Terminal, 50 Pieces



General Information	
Extended Product Type	KLEMME
Product ID	GHQ6301902R0001
EAN	4016779079303
Catalog Description	KLEMME Connection Terminal, 50 Pieces
Long Description	Interconnects ABB i-bus® devices having a rear side connection terminal that are mounted on DIN EN 5022 DIN-rails. The data rail is fixed into the DIN-rail, using the adhesive stripe on the rear.
Installation	
Instructions and Manuals	2CDC503014D0201
Mounting Type	Accessory
Technical	
Data Sheet, Technical Information	2CDC503014D0201
Compatible Bus Systems	KNX (TP)
Product Range	KNX

Manual Operation	No
Number of Batteries	0
Terminal Type	Bus Connection

Electrical

Power Loss	0 W
------------	-----

Material Compliance

RoHS Status	No declaration needed
REACH Declaration	9AKK108468A9644
REACH Information	False - does not contains substances > 0.1 mass percentage
Conflict Minerals Reporting Template (CMRT)	9AKK108468A3363

Environmental

Degree of Protection	IP20
----------------------	------

Dimensions

Product Net Width	10 mm
Product Net Height	12.4 mm
Product Net Depth / Length	10 mm
Product Net Weight	0.002 kg

Certificates and Declarations

Declaration of Conformity - CE	No declaration needed
--------------------------------	-----------------------

Classifications

ETIM 9	EC000635 - Connection-/branching terminal for bus system
eClass	V11.0 : 27143105
UNSPSC	39121432
IDEA Granular Category Code (IGCC)	4603 >> Electrical terminals
Object Classification Code	A
WEEE Category	5. Small Equipment (No External Dimension More Than 50 cm)
WEEE B2C / B2B	Business To Consumer

---

## Categories

---

Low Voltage Products and Systems → Building and Home Automation Solutions → KNX → Connection and Wiring → Connection  
Terminals and Accessories

