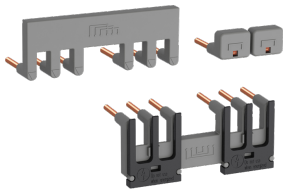




PRODUCT-DETAILS

BEY38-4KF

BEY38-4KF Connection Set for Star-Delta Starter



General Information	
Extended Product Type	BEY38-4KF
Product ID	1SBN082323R2000
EAN	3471523007710
Catalog Description	BEY38-4KF Connection Set for Star-Delta Starter
Long Description	BEY38-4KF is a connection set used to connect the main poles of the Line, Delta and Star contactors of a star-delta starter for AF26..K ... AF38..K, AFC26..K ... AFC38..K contactor ranges.
	The connection sets are made up of:
	• Line contactor / delta contactor: upstream phase-to-phase connection
	• Delta contactor / star contactor: downstream connection in parallel
• Star contactor: star point upstream	
• Insulated, solid copper bar	
• Black fork pieces for a quick dismounting of line, delta and star contactors.	
With the Push-in Spring terminals, one push is all you need for a faster than ever installation, an easier than ever wiring and a reliable as ever connection.	

Ordering	
Minimum Order Quantity	1 piece
Customs Tariff Number	85389099

Popular Downloads	
Instructions and Manuals	1SBC101057M6801
CAD Dimensional Drawing	2CDC001079B0201

Dimensions	
Product Net Width	79 mm
Product Net Depth / Length	30 mm
Product Net Height	39 mm
Product Net Weight	0.09 kg

Technical	
Standards	EN 60947-1, EN 60947-4-1, UL 60947-4-1, CSA C22.2 No. 60947-4-1
Rated Operational Voltage	Main Circuit 690 V AC
Rated Frequency (f)	Main Circuit 50 / 60 Hz
Terminal Type	Push-in Spring Terminals
Suitable For	AF26 AF26Z AF30 AF30Z AF38 AF38Z

Material Compliance	
Conflict Minerals Reporting Template (CMRT)	9AKK108467A5658
REACH Declaration	2CMT2021-006202
RoHS Information	2CMT2021-006277
RoHS Status	Following EU Directive 2011/65/EU
WEEE B2C / B2B	Business To Business
WEEE Category	5. Small Equipment (No External Dimension More Than 50 cm)

Certificates and Declarations	
Declaration of Conformity - CE	1SBD250021U1000
Declaration of Conformity - UKCA	1SBD250043U1000
GOST Certificate	GOST_POCCFR.ME77.B07175.pdf
UL Certificate	UL-US-L312527-151-12119002-5 UL-CA-L312527-451-12119002-5

Container Information	
Package Level 1 Units	box 1 piece
Package Level 1 Width	44 mm
Package Level 1 Depth / Length	83 mm
Package Level 1 Height	43 mm
Package Level 1 Gross Weight	0.105 kg
Package Level 1 EAN	3471523007710
Package Level 3 Units	840 piece

Classifications

ETIM 6	EC002498 - Accessories for low-voltage switch technology
ETIM 7	EC002498 - Accessories for low-voltage switch technology
ETIM 8	EC002498 - Accessories/spare parts for low-voltage switch technology
eClass	V11.0 : 27371392
UNSPSC	39121521
IDEA Granular Category Code (IGCC)	4727 >> Motor starter controls
E-Number (Finland)	3709752

Categories

Low Voltage Products and Systems → Control Products → Contactors → Block Contactors

