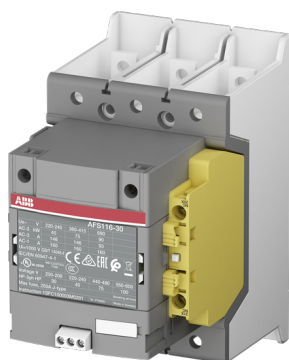




 PRODUCT-DETAILS

AFS116-30-12B-34

AFS116-30-12B-34



General Information

Extended Product Type	AFS116-30-12B-34
Product ID	1SFL427082R3412
EAN	7320500540626
Catalog Description	AFS116-30-12B-34

Long Description	<p>The AFS116-30-12B-34 is a 3 pole - 690 V IEC or 600 V UL contactor with pre-mounted 1 left (1 N.O + 1 N.C.) and fixed 1 right (1 N.C.) side mounted auxiliary contact blocks with Main Circuit Bars connections, controlling motors up to 55 kW / 400 V AC (AC-3) or 75 hp / 480 V UL and switching power circuits up to 160 A (AC-1) or 160 A UL general use. AFS contactors can be easily integrated in machine manufacturer's systems complying with main standards EN ISO 13849 and EN 62061 - guaranteeing the safe use of your machinery and equipment. An easily identifiable yellow low energy auxiliary contact block ensures the status feedback circuits required in machine safety applications. Thanks to the AF technology, the contactor has a wide control voltage range (250-500 V 50/60 Hz and DC), managing large control voltage variations, reducing panel energy consumptions and ensuring distinct operations in unstable networks. Furthermore, surge protection is built-in, offering a compact solution. AF contactors have a block type design, can be easily extended with add-on auxiliary contact blocks and an additional wide range of accessories.</p>
------------------	--

Ordering

Minimum Order Quantity	1 piece
Customs Tariff Number	85364900

Popular Downloads

Data Sheet, Technical Information	1SBC100208C02__
Instructions and Manuals	1SFC100003M0201
CAD Dimensional Drawing	2CDC001079B0201

Dimensions

Product Net Width	90 mm
Product Net Depth / Length	126 mm
Product Net Height	150 mm
Product Net Weight	1.3 kg

Technical

Number of Main Contacts NO	3
Number of Main Contacts NC	0
Number of Auxiliary Contacts NO	1
Number of Auxiliary Contacts NC	2
Rated Operational Voltage	Main Circuit 690 V
Rated Frequency (f)	Main Circuit 50 / 60 Hz
Conventional Free-air Thermal Current (I _{th})	acc. to IEC 60947-4-1, Open Contactors $\Theta = 40\text{ °C}$ 160 A
Rated Operational Current AC-1 (I _e)	(690 V) 40 °C 160 A (690 V) 60 °C 145 A (690 V) 70 °C 130 A
Rated Operational Current AC-3 (I _e)	(415 V) 60 °C 116 A (440 V) 60 °C 116 A (500 V) 60 °C 110 A (690 V) 60 °C 65 A (380 / 400 V) 60 °C 116 A (220 / 230 / 240 V) 60 °C 116 A
Rated Operational Current AC-3e (I _e)	(415 V) 60 °C 116 A (440 V) 60 °C 116 A (500 V) 60 °C 110 A (690 V) 60 °C 65 A (380 / 400 V) 60 °C 116 A (220 / 230 / 240 V) 60 °C 116 A
Rated Operational Power AC-3 (P _e)	(415 V) 55 kW (440 V) 75 kW (500 V) 75 kW (690 V) 55 kW (380 / 400 V) 55 kW (220 / 230 / 240 V) 30 kW
Rated Operational Power AC-3e (P _e)	(415 V) 55 kW (440 V) 75 kW (500 V) 75 kW (690 V) 55 kW

	(380 / 400 V) 55 kW (220 / 230 / 240 V) 30 kW
Rated Breaking Capacity AC-3	8 x I _e AC-3
Rated Breaking Capacity AC-3e	8.5 x I _e AC-3e
Rated Making Capacity AC-3	10 x I _e AC-3
Rated Making Capacity AC-3e	12 x I _e AC-3e
Short-Circuit Protective Devices	gG Type Fuses 250 A
Rated Short-time Withstand Current Low Voltage (I _{cw})	at 40 °C Ambient Temp, in Free Air, from a Cold State 10 s 928 A at 40 °C Ambient Temp, in Free Air, from a Cold State 15 min 160 A at 40 °C Ambient Temp, in Free Air, from a Cold State 1 min 379 A at 40 °C Ambient Temp, in Free Air, from a Cold State 1 s 1160 A at 40 °C Ambient Temp, in Free Air, from a Cold State 30 s 536 A
Maximum Breaking Capacity	cos phi=0.45 (cos phi=0.35 for I _e > 100 A) at 440 V 2000 A cos phi=0.45 (cos phi=0.35 for I _e > 100 A) at 690 V 1000 A
Maximum Electrical Switching Frequency	(AC-1) 300 cycles per hour (AC-2 / AC-4) 150 cycles per hour (AC-3) 300 cycles per hour
Rated Insulation Voltage (U _i)	acc. to IEC 60947-4-1 and VDE 0110 (Gr. C) 690 V acc. to UL/CSA 600 V
Rated Impulse Withstand Voltage (U _{imp})	Main Circuit 8 kV
Mechanical Durability	5 million
Maximum Mechanical Switching Frequency	300 cycles per hour
Coil Operating Limits	(acc. to IEC 60947-4-1) 0.85 x U _c Min. ... 1.1 x U _c Max. (at θ ≤ 70 °C)
Rated Control Circuit Voltage (U _c)	50 Hz 250 ... 500 V 60 Hz 250 ... 500 V DC Operation 250 ... 500 V
Coil Consumption	Average Pull-in Value 50 Hz 260 V·A Average Pull-in Value 60 Hz 260 V·A Holding at Max. Rated Control Circuit Voltage 50 Hz 16.1 V·A Holding at Max. Rated Control Circuit Voltage 60 Hz 16.1 V·A Holding at Max. Rated Control Circuit Voltage DC 2.5 W Pull-in at Max. Rated Control Circuit Voltage 50 Hz 205 V·A Pull-in at Max. Rated Control Circuit Voltage 60 Hz 205 V·A Pull-in at Max. Rated Control Circuit Voltage DC 230 W
Operate Time	Between Coil De-energization and NO Contact Opening 37 ... 47 ms Between Coil Energization and NO Contact Closing 25 ... 55 ms
Connecting Capacity Main Circuit	Flexible 2 x 10 ... 70 mm ² Rigid Cu-Cable 1 x 10 ... 95 mm ²
Connecting Capacity Auxiliary Circuit	Flexible with Ferrule 2x 0.75 ... 2.5 mm ² Flexible with Insulated Ferrule 2x 0.75 ... 2.5 mm ² Flexible 2x0.75 ... 2.5 mm ² Solid 2 x 1 ... 4 mm ² Stranded 2 x 1 ... 4 mm ²
Degree of Protection	acc. to IEC 60529, IEC 60947-1, EN 60529 Coil Terminals IP20 acc. to IEC 60529, IEC 60947-1, EN 60529 Main Terminals IP00
Terminal Type	Main Circuit: Bars

Technical UL/CSA

Maximum Operating Voltage UL/CSA	Main Circuit 600 V
General Use Rating UL/CSA	(600 V AC) 160 A
Horsepower Rating	(200 ... 208 V AC) Three Phase 30 hp

UL/CSA

(220 ... 240 V AC) Three Phase 40 hp
 (440 ... 480 V AC) Three Phase 75 hp
 (550 ... 600 V AC) Three Phase 100 hp

Environmental

Ambient Air Temperature	Close to Contactor Fitted with Thermal O/L Relay (0.85 ... 1.1 Uc) -25 ... 50 °C Close to Contactor without Thermal O/L Relay (0.85 ... 1.1 Uc) -40 ... 70 °C Close to Contactor for Storage -40 ... 70 °C
Maximum Operating Altitude Permissible	Without Derating 3000 m

Material Compliance

Conflict Minerals Reporting Template (CMRT)	9AKK108467A5658
REACH Declaration	2CMT2021-006202
RoHS Information	2CMT2021-006277
RoHS Status	Following EU Directive 2011/65/EU and Amendment 2015/863 July 22, 2019
Toxic Substances Control Act - TSCA	2CMT2023-006525
WEEE B2C / B2B	Business To Business
WEEE Category	5. Small Equipment (No External Dimension More Than 50 cm)

Circular Value

ABB EcoSolutions	Yes
Circular Design Principles Recyclability Rate	Design for Closing Resource Loops - Standard EN45555 - 87.8 %
End of Life Instructions	1SFC100112M0001
Group Waste to Landfill Target	Non-hazardous waste is sent to a landfill, where there is no alternative option available within 100km of a facility
Improved Resource Efficiency for Customers	Product Efficiency - Product requires less energy to operate compared to similar product on market or older products from the same line
Sustainable Material Content	Recycled Metal - 37 %

Eco Transparency

Environmental Product Declaration - EPD	1SFC100092D0201
---	-----------------

Certificates and Declarations

CB Certificate	SEMKO_SE-70479M1
CQC Certificate	CQC2013010304604055
Declaration of Conformity - CCC	2020980304001304
Declaration of Conformity - CE	2CMT2018-005695
Declaration of Conformity - UKCA	2CMT2020-006125
EAC Certificate	1SFC101360D1101

SUVA Certificate	2CMT2019-005856
UL Certificate	20120925-E36588

Container Information

Package Level 1 Units	box 1 piece
Package Level 1 Width	207 mm
Package Level 1 Depth / Length	216 mm
Package Level 1 Height	150 mm
Package Level 1 Gross Weight	1.5 kg
Package Level 1 EAN	7320500540626

Classifications

Object Classification Code	Q
ETIM 4	EC000066 - Magnet contactor, AC-switching
ETIM 5	EC000066 - Magnet contactor, AC-switching
ETIM 6	EC000066 - Power contactor, AC switching
ETIM 7	EC000066 - Power contactor, AC switching
ETIM 8	EC000066 - Power contactor, AC switching
eClass	V11.0 : 27371003
UNSPSC	39121529
IDEA Granular Category Code (IGCC)	4758 >> lec Contactors

Accessories

Identifier	Description	Type	Quantity	Unit Of Measure
1SFN010832R1010	CEL19-10 Auxiliary Contact Block	CEL19-10	1	piece
1SFN010832R1001	CEL19-01 Auxiliary Contact Block	CEL19-01	1	piece
1SFN010820R1011	CAL19-11 Auxiliary Contact Block	CAL19-11	1	piece
1SFN074208R1000	LD146-30 Connection Module	LD146-30	1	piece
1SFN124203R1000	LT140-30L Terminal Shroud	LT140-30L	1	piece
1SFN074207R1000	LW140 Terminal Enlargement	LW140	1	piece
1SFN074210R1000	LX140 Terminal Extension	LX140	1	piece
1SFN074203R1000	LY140 Connecting Strip	LY140	1	piece
1SFN124801R1000	LT205-30C Terminal Shroud	LT205-30C	1	piece
1SFN124803R1000	LT205-30L Terminal Shroud	LT205-30L	1	piece
1SFN124804R1000	LT205-30Y Terminal Shroud	LT205-30Y	1	piece
1SFN074807R1000	LW205 Terminal Enlargement	LW205	1	piece
1SFN074810R1000	LX205 Terminal Extension	LX205	1	piece
1SFN074703R1000	LY185 Connecting Strip	LY185	1	piece
1SFN075103R1000	LY300 Connecting Strip	LY300	1	piece
1SFN075410R1000	LX370 Terminal Extension	LX370	1	piece
1SFN125406R1000	LT370-30D Terminal Shroud	LT370-30D	1	piece
1SFN125404R1000	LT370-30Y Terminal Shroud	LT370-30Y	1	piece
1SFN125403R1000	LT370-30L Terminal Shroud	LT370-30L	1	piece
1SFN125401R1000	LT370-30C Terminal Shroud	LT370-30C	1	piece

Categories

Low Voltage Products and Systems → Control Products → Contactors → Block Contactors → AFS Contactors → AFS116

