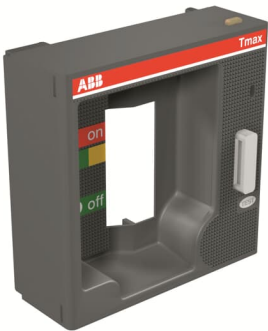




PRODUCT-DETAILS

FLD T6 W

FLD T6 W



General Information	
Extended Product Type	FLD T6 W
Product ID	1SDA060418R1
EAN	8015644628925
Catalog Description	FLD T6 W
Long Description	FRONT PANEL FOR WITHDRAWABLE CIRCUIT-BREAKER T6

Circular Value	
Conflict Minerals Reporting Template (CMRT)	9AKK108467A5658
Toxic Substances Control Act - TSCA	9AKK108467A8326

Environmental	
Environmental Information	9AKK108467A6707

REACH Declaration	9AKK108466A1425
RoHS Information	9AKK108466A1424
RoHS Status	Following EU Directive 2011/65/EU and Amendment 2015/863 July 22, 2019

Ordering

Order Code US and Canada	KT6FLDW
EAN	8015644628925
Minimum Order Quantity	1 piece
Customs Tariff Number	85389099

Dimensions

Product Net Weight	0.2 kg
--------------------	--------

Container Information

Package Level 1 Units	1 piece
Package Level 1 Width	156 mm
Package Level 1 Height	52 mm
Package Level 1 Depth / Length	196 mm
Package Level 1 Gross Weight	0.422 kg
Package Level 1 EAN	8015644628925

Additional Information

Configuration Type	Loose or configurable
Product Main Type	Accessories for Tmax T
Product Name	Accessory
Product Type	Accessory
Standards	IEC
Suitable For	T6
Suitable for Product Class	SACE Tmax T

Certificates and Declarations

Data Sheet, Technical Information	1SDC210015D0208 1SDC210300D0201
Declaration of Conformity - CE	Refer to the EU Declaration of the relative Circuit Breaker
Instructions and Manuals	1SDH000479R0631

Classifications

ETIM 7	EC002498 - Accessories for low-voltage switch technology
ETIM 8	EC002498 - Accessories/spare parts for low-voltage switch technology
ETIM 9	EC002498 - Accessories/spare parts for low-voltage switch technology

IDEA Granular Category Code (IGCC)	5219 >> Switch part or accessory
Object Classification Code	Q
UNSPSC	39122221
WEEE Category	5. Small Equipment (No External Dimension More Than 50 cm)
eClass	V11.1 : 27371390

Categories

Low Voltage Products and Systems → Circuit Breakers → Moulded Case Circuit Breakers → Accessories for Tmax T

