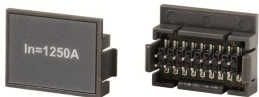




PRODUCT-DETAILS

RATING PLUG In=6300A E6IEC EXT.COD

RATING PLUG In=6300A E6IEC EXT.COD



General Information	
Extended Product Type	RATING PLUG In=6300A E6IEC EXT.COD
Product ID	1SDA058249R1
EAN	8015644605360
Catalog Description	RATING PLUG In=6300A E6IEC EXT.COD
Long Description	RATING PLUG In=6300A E6IEC EXTRA CODE

Circular Value	
Conflict Minerals Reporting Template (CMRT)	Document availability on demand

Environmental	
REACH Declaration	9AKK108466A1425
RoHS Information	9AKK108466A1424
RoHS Status	Following EU Directive 2011/65/EU and Amendment 2015/863 July 22, 2019

Ordering	
EAN	8015644605360
Minimum Order Quantity	1 piece
Customs Tariff Number	85389099

Dimensions	
Product Net Weight	1 kg

Container Information	
Package Level 1 Units	1 piece
Package Level 1 Gross Weight	0.1 kg
Package Level 1 EAN	8015644605360

Additional Information	
Configuration Type	Mounted only
Product Main Type	Accessories for Emax
Product Name	Accessory
Product Type	Accessory
Rated Current (I _n)	6300 A
Standards	IEC
Suitable For	E6
Suitable for Product Class	SACE Emax

Certificates and Declarations	
Data Sheet, Technical Information	1SDC200006D0209
Declaration of Conformity - CE	1SDL000165R0017
Instructions and Manuals	1SDC200006D0209

Classifications	
ETIM 7	EC002498 - Accessories for low-voltage switch technology
ETIM 8	EC002498 - Accessories/spare parts for low-voltage switch technology
Object Classification Code	Q
WEEE Category	5. Small Equipment (No External Dimension More Than 50 cm)

Categories

Low Voltage Products and Systems → Circuit Breakers → Air Circuit Breakers → Accessories for Emax

