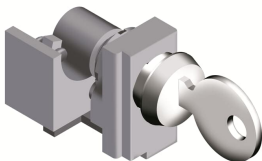




PRODUCT-DETAILS

KLC T2 KEY LOCK RONIS OP, X C.BREAK.  
KLC T2 KEY LOCK RONIS OP, X C.BREAK.



General Information	
Extended Product Type	KLC T2 KEY LOCK RONIS OP, X C.BREAK.
Product ID	1SDA053529R1
EAN	8015644544775
Catalog Description	KLC T2 KEY LOCK RONIS OP, X C.BREAK.
Long Description	KEY LOCK RONIS 622 IN OPEN WITH KEY WITHDRAWABLE IN OPEN POSITION FOR C.BREAKER T2

Environmental	
Environmental Information	1SDC210015D0201

Ordering	
EAN	8015644544775
Minimum Order Quantity	1 piece
Customs Tariff Number	85389099

Dimensions	
Product Net Weight	0.064 kg

Container Information	
Package Level 1 Units	1 piece
Package Level 1 Gross Weight	0.064 kg
Package Level 1 EAN	8015644544775

Additional Information	
Configuration Type	Loose or configurable
Product Main Type	Accessories for Tmax T
Product Name	Accessory
Product Type	ACC
Standards	IEC
Suitable For	T2
Suitable for Product Class	SACE Tmax T

Certificates and Declarations	
Data Sheet, Technical Information	1SDC210015D0201
Declaration of Conformity - CE	Refer to the EU Declaration of the relative Circuit Breaker
Instructions and Manuals	1SDC210015D0201

Classifications	
ETIM 7	EC002498 - Accessories for low-voltage switch technology
ETIM 8	EC002498 - Accessories/spare parts for low-voltage switch technology
Object Classification Code	Q
UNSPSC	39121100
WEEE Category	5. Small Equipment (No External Dimension More Than 50 cm)

Categories	
Low Voltage Products and Systems → Circuit Breakers → Moulded Case Circuit Breakers → Accessories for Tmax T	

