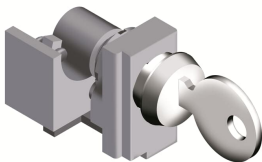




PRODUCT-DETAILS

KLC T2 KEY LOCK RONIS WIT,OP/CL X C.BREA

KLC T2 KEY LOCK RONIS WIT,OP/CL X C.BREA



General Information

Extended Product Type	KLC T2 KEY LOCK RONIS WIT,OP/CL X C.BREA
Product ID	1SDA052015R1
EAN	8015644525309
Catalog Description	KLC T2 KEY LOCK RONIS WIT,OP/CL X C.BREA
Long Description	KEY LOCK RONIS 622 IN OPEN WITH KEY WITHDRAWABLE IN OPEN-CLOSED POSITION FOR C.BREAKER T2

Environmental

Environmental Information	1SDC210015D0201
RoHS Information	1SDL000200R0001

Ordering

EAN	8015644525309
Minimum Order Quantity	1 piece
Customs Tariff Number	85389099

<b>Dimensions</b>	
Product Net Weight	0.064 kg

<b>Container Information</b>	
Package Level 1 Units	1 piece
Package Level 1 Gross Weight	0.064 kg
Package Level 1 EAN	8015644525309

<b>Additional Information</b>	
Configuration Type	Loose or configurable
Device	T2
Product Main Type	Accessories for Tmax T
Product Name	Accessory
Product Type	ACC
Standards	IEC
Suitable For	T2
Suitable for Product Class	SACE Tmax T

<b>Certificates and Declarations</b>	
Data Sheet, Technical Information	1SDC210015D0201
Declaration of Conformity - CE	Refer to the EU Declaration of the relative Circuit Breaker
Instructions and Manuals	1SDC210015D0201

<b>Classifications</b>	
ETIM 7	EC002498 - Accessories for low-voltage switch technology
ETIM 8	EC002498 - Accessories/spare parts for low-voltage switch technology
Object Classification Code	Q
UNSPSC	39121100
WEEE Category	5. Small Equipment (No External Dimension More Than 50 cm)

<b>Categories</b>	
Low Voltage Products and Systems → Circuit Breakers → Moulded Case Circuit Breakers → Accessories for Tmax T	

